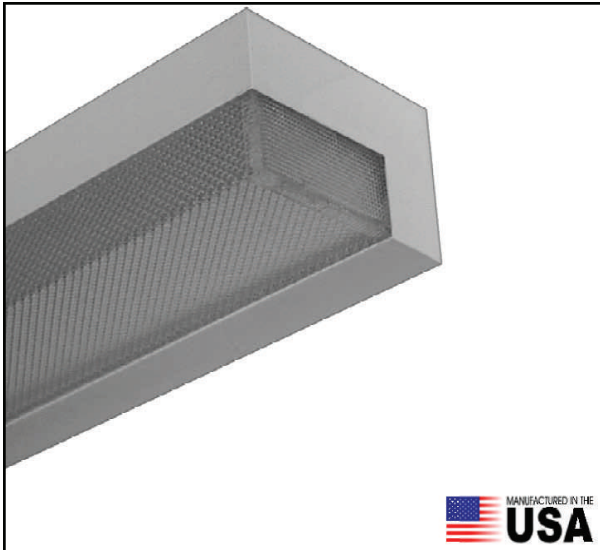


LED WALL BRACKET SQUARE



FIXTURE TYPE _____

JOB NAME _____

REP **HUDNUT LED LIGHTING**

PART NUMBER _____

SPECIFICATIONS

Full fixture replacement with linear LED lamps*	High 80+ CRI white LEDs*
120—277 volt AC operation	>50,000 hour lamp life to 70% original output*
No external ballasts, drivers, or power supplies = lower maintenance	Lamp is UL listed 120-277VAC*
Standard G13 bi-pin sockets for easy lamp maintenance	Fixture is ETL listed
Lamp powered from one end only to meet UL safety requirements*	and conforms to UL 1958-SUB 8750
Dedicated LED fixture ensures proper operation and maximum life	Fixture is made in the USA
Instant on to full light output even in cold environments*	5 year limited warranty on lamps and fixture*
Operates from minus 40 degrees F. through plus 122 degrees F.*	Fixture and lamps are recyclable
No mercury, no lead, no glass	See reverse for additional fixture information.

ORDERING INFORMATION

<u>SERIES</u>	<u>LAMP ROWS</u>	<u>LENGTH</u>	<u>LAMP TYPE</u>	<u>OPTICAL</u>	<u>MECH OPT</u>	<u>ELEC OPT</u>	<u>TYPE</u>	<u>VOLTS</u>	<u>LAMP COLOR*</u>	<u>LAMP LENS*</u>
BSQ100	1	2'	LR = UL listed	FWA	X = none	X = none	LED81	UNV	3500k	CL = clear
	2	3'		PA	DL = damp loc.	TS2 = maint. switch			3500k-LW	FR = frost
		4'	(SEE REVERSE FOR INFO)	MS = motion sensor		4100k				
		6'			4100k-LW					
		8'			5500k					
					see reverse for additional information	5500k-LW				

NOTES

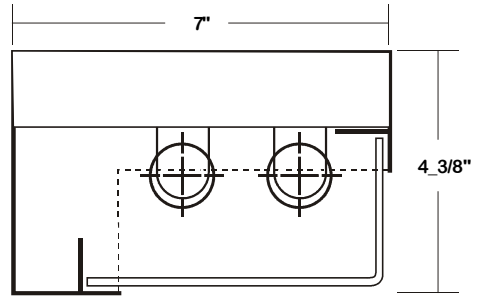
***Other options are available. Contact Hudnut LED Lighting Solutions for additional information
Product may differ slightly from photo. All values are nominal.

*See TL-SH series lamp cut sheet for additional information. Lamps are shipped separately for field installation.

HUDNUT LED LIGHTING

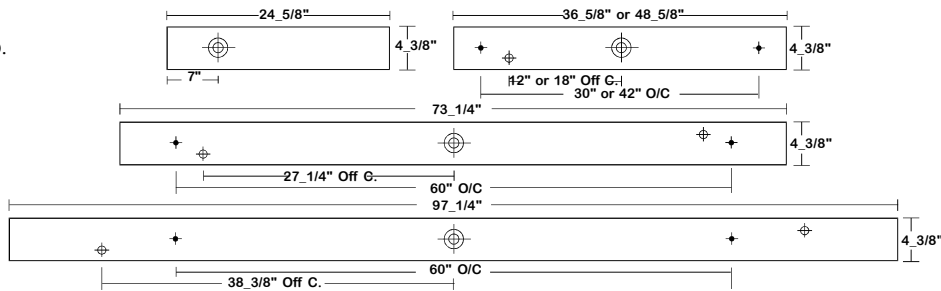
BSQ100 SERIES - LED T8

CROSS SECTION



BACK PLATE

- ◆ 11/16" STEM MTG. K.O.
- ⊕ 7/8" OFFSET K.O.
- ⊕ 2" K.O.



SAFETY SWITCH

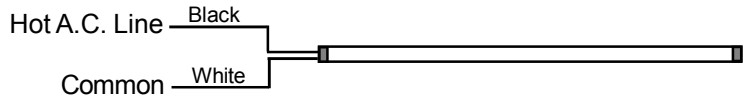


- TS2- LED Luminaire On/Off Safety Switch**
- Easily accessible on exterior of wire way.
 - Allows individual fixture to be switched ON/OFF during re-lamping or Maintenance.
 - Prevents damage to lamp and electrical shock during lamping and re-lamping.
 - Allows safe entry to wire way channel where power connector can be disconnected for maintenance to fixture.

LAMP TYPE

LW - Top lamp (always on) will be 1/2 wattage. See HUDNUT TL-SH series LED T8 lamp specifications for additional lamp information. All 6' fixtures use 2ea 3' lamps per lamp row. All 8' fixtures use 2ea 4' lamps per row.

LR = LED T8 light tube, self-driven.
Black lead and white lead connected to the same end.



OPTIONS AND ACCESSORIES

ELECTRICAL OPTIONS	SUFFIX	MECHANICAL OPTIONS	SUFFIX	OPTICAL OPTIONS	SUFFIX
LED Luminaire ON/OFF Safety Switch	TS2	Damp Location	TP	Clear Prismatic Acrylic	PA
Pull Switch	PS1	Black Housing	BLK	Flat White Acrylic	FWA
6' 3Wire Cord + Plug (U-Ground)	CP3			American Louver® Injection Molded Lens	IML

*See Appropriate Reference Page

SPECIFICATIONS

- **TYPE**
 - **CONSTRUCTION**
 - **OPTICS**
 - **FINISH**
 - **WIRING**
 - **LABELS**
- Wall mounted luminaire with front and down light for LED T8 light tube (s)** with internal driver.
20 ga. cold rolled steel welded housing.
Clear prismatic acrylic lens standard. Extensive variety of lenses and diffusers available.
Baked white powder coated finish, minimum reflectance 90%, painted after fabrication.
Operates T8 LED light tube(s)**.
ETL Listed. Conforms to UL standard 1598 - SUB 8750.



HUDNUT LED LIGHTING

11916 NE SUMNER STREET PORTLAND, OREGON 97220 503-233-8088 INFO@HUDNUT.COM WWW.HUDNUT.COM